

# AICON Berth

## Intelligent Berth Management, Activated

**AICON Berth** is a cutting-edge Berth Planning Solution powered by AI/ML technology and advanced optimization techniques to transform the way terminal operators manage their berth operations. AICON Berth offers unparalleled opportunities for win-win berth utilization by combining real-time feeds with predicted vessel arrival and durations for optimal berth planning, and adding collaboration tools with vessel operators and other key stakeholders.

### Your Quay Potential, Maximized

#### AI-Powered Berth Optimization

AICON Berth aligns berth planning with yard container inventory position and provides accurate predictions of vessel ETAs, ETCs, visit duration, and berth assignments.

#### Auto Berth Plan and QC Allocations

AICON Berth automates the berth planning process, generating efficient berth plans, and optimizing the allocation of QCs across the entire quay for seamless operations.

#### Integration with Third-Party Systems

AICON Berth seamlessly integrates with third-party systems such as Marine Traffic, Weather, and Tides, enhancing data accuracy and enabling better decision support.

#### Berth Planning for Ad hoc Requests

AICON Berth provides the flexibility to handle ad hoc requests and accommodate changing operational requirements, ensuring efficient and responsive berth management.

Exceed the Past.  
Shape the Future.

5 - 20 %

INCREASED BERTH  
UTILIZATION



15 - 50 %

IMPROVED VESSEL  
VISIT ETA & DURATION  
RELIABILITY



5 - 25 %

REDUCE VESSEL WAIT  
TIMES AT ANCHOR





## Increase Utilization. Amplify Revenue.

### Maximized Berth Utilization

- Increases berth occupancy rates, ensuring optimal utilization of valuable berth space and maximizing revenue potential.

### Reliable Vessel Visits

- Applies AI-powered predictions to enhance the accuracy of vessel visit ETAs and durations, improving operational planning and reducing delays.

### Improved Berth Availability

- Provides reliable information of berth availability, enabling effective negotiation of arrival and departure times with vessel operators and enhancing customer service.

### Reduced Environmental Impact

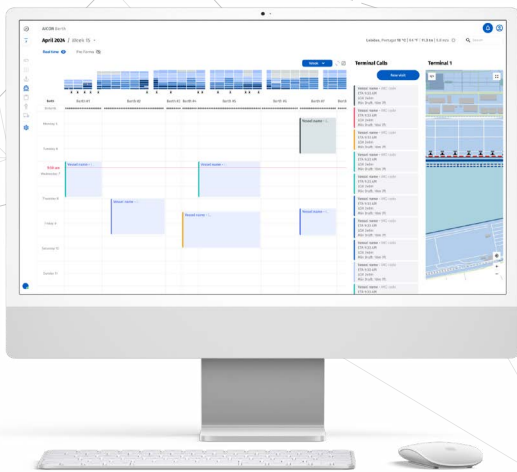
- Reduces fuel consumption and associated costs, by optimizing berth utilization and vessel schedules, contributing to a greener port operation, and improving the bottom line of a terminal's primary customers.

### Data-Driven Decision Making

- Empowers port operators with advanced analytics and valuable insights, enabling continuous process improvement and better strategic decision-making.

### Comprehensive Future Planning

- Provides insights into future states and resource needs, supporting long-term strategic initiatives.



### Vessel Operator Collaboration

With real-time collaboration and visibility, AICON Berth enables terminal operators to engage with vessel operators and other port community constituents, fostering enhanced decision-making, better customer service and enabling cost savings across multiple parties.

### Tide and Channel Planning

AICON Berth plans berth usage by considering tide and channel conditions, ensuring that vessel movements are safe and efficient.

### Berth Viewer

AICON Berth provides a comprehensive view of upcoming berth states aiding in long-term planning and strategic.

For more information contact:

[sales@avlino.com](mailto:sales@avlino.com)

[www.avlino.com](http://www.avlino.com)

